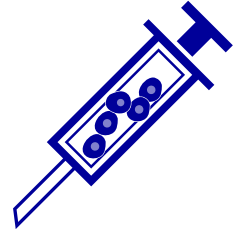


# Partner of choice for the delivery of iPSC-based cell therapeutics



- ▶ Fully integrated platform to move iPSC-based cell therapy projects from inception to the clinic
- ▶ In-house GMP manufacturing capabilities, enabling a smooth transition into development and the clinic
- ▶ Extensive expertise and one of the largest iPSC teams in the industry
- ▶ A broad and innovative portfolio of early cell therapeutics projects available for partnering

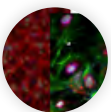
## Joining forces to drive the development of innovative and high-value product candidates

### Evotec

- ▶ End-to-end platform, all under one roof
- ▶ Early innovation projects
- ▶ Research and development
- ▶ GMP manufacturing

### Partner

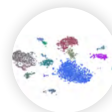
- ▶ Clinical development
- ▶ Commercialization



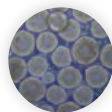
iPSC-derived cell types



ArrayCGH, karyotyping, WGS



Single cell sequencing



3D expansion



Upscaling



Cell QC



GMP production

## Partnering opportunities

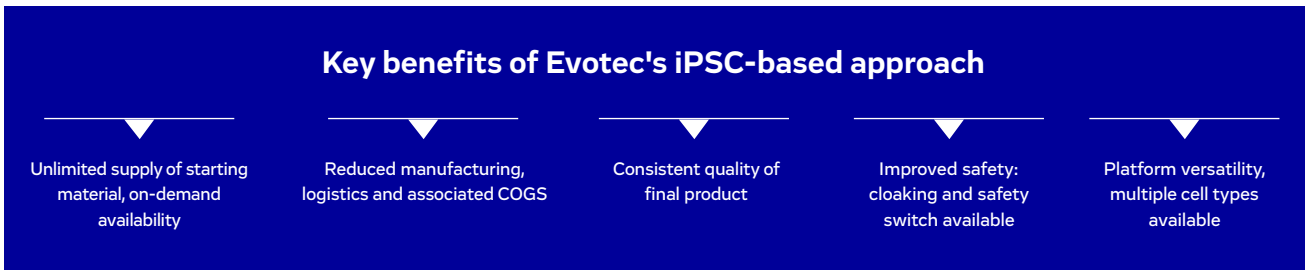
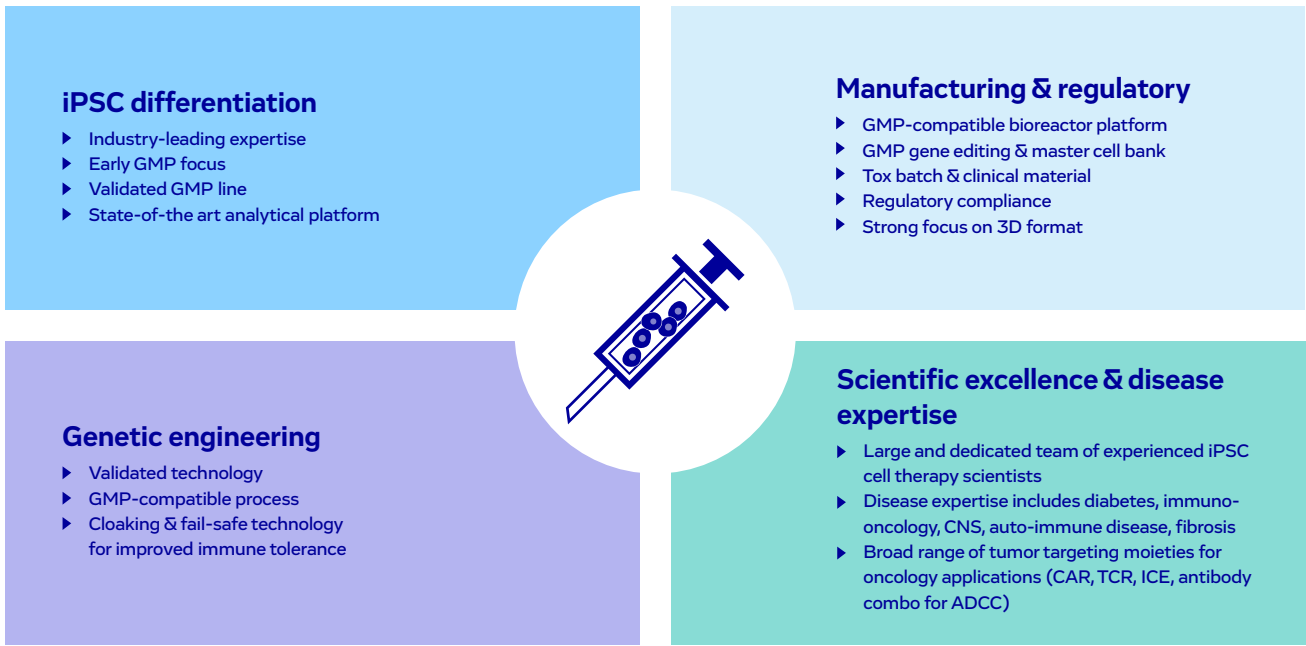
- ▶ Evotec is looking for strategic partners and collaborations to fully leverage our cell therapy platform and accelerate projects towards transformative therapies.
- ▶ Flexible collaborative models: From collaboration based on proprietary cell types, to development of new therapeutic cell types.
- ▶ Tailored and flexible partnership models.

## Contact us

*Victor Aguilar Lopez, PhD, MBA  
Sr. Director, Global BD Cell Therapy  
+33 (0)659 219 725 (mobile)  
Victor.AguilarLopez@evotec.com*



# From idea to the patient: End-to-end platform integrated under one roof



## Experience matters – Evotec has the broadest proprietary iPSC pipeline in industry

	Field	Program/Project	Disease area	Protocol	Pre-clinical research	Pre-clinical development	IND / Phase I	iPSC-derived cell types
Part-nered	Cancer immunotherapy	Pharma	γδ iT	Oncology	Undisclosed			iNK Natural killer cells iT T cells
	Metabolic disease	Sernova	E.iBeta (Device)	Diabetes				iMAC Macrophages iBeta Pancreatic islets iCM Cardiomyocytes iRPE Retinal pigment epithelium cells iPR Photoreceptors
Part-nering oppor-tunities	Cancer immunotherapy		iNK	Oncology				
			iMAC	Oncology				
			αβ iT	Oncology				
	I&I <sup>1</sup>		iNK, αβ iT	Fibrosis, SLE <sup>2</sup>				
	Metabolic disease		E.iBeta (Engineered)	Diabetes				
			ICM	Heart failure				
	Other		iRPE, iPR	Ophthalmology				
		...						

Unpartnered programs/projects are open for new business opportunities

<sup>1</sup>Inflammation and Immunology  
<sup>2</sup>Systemic Lupus Erythematosus

▶ Each cell type can deliver multiple differentiated products